

✓ 4 Beds

✓ 3 Baths

# The Venice

✓ 2,621 SF

✓ 2 Car Garage

*Elevation A*



*Elevation B*



*Elevation C*



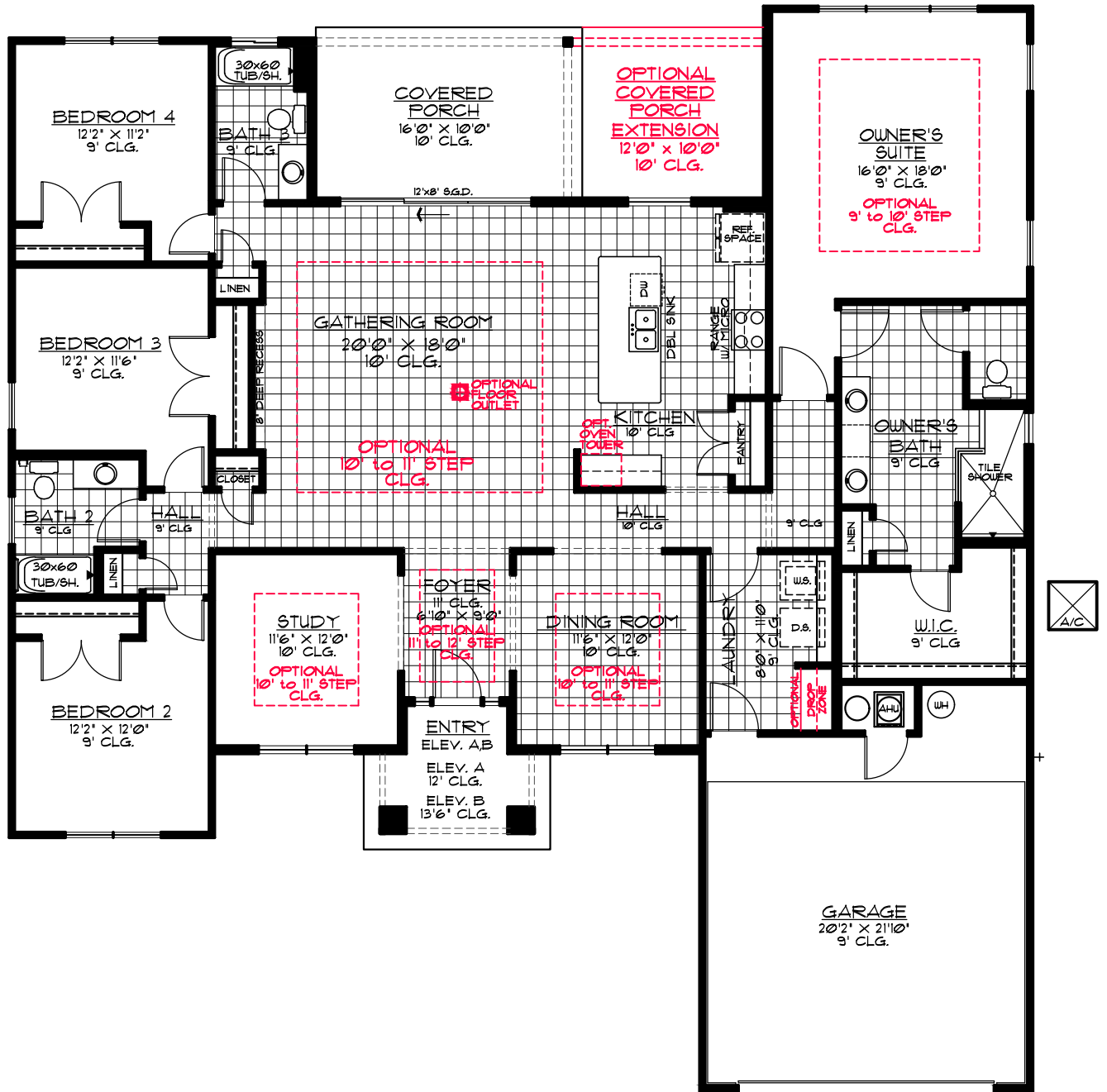
*Elevation D*



**SEDA**  
NEW HOMES

WE ARE HONORED THAT YOU VOTED US  
**BEST LOCAL HOME BUILDER**





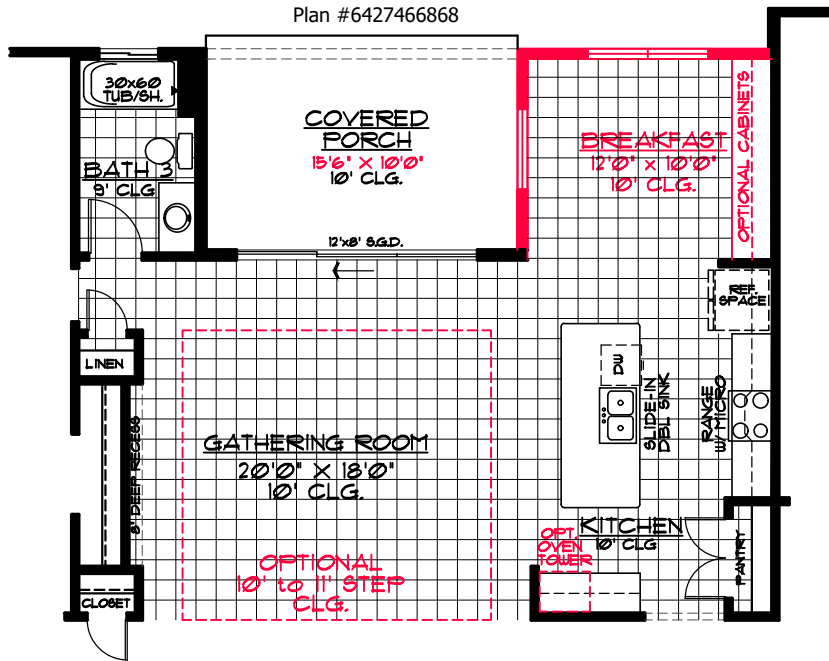
Date: 4/21/2023 Plan #6426216868 CGC020880

Prices, products, standard features, available options, front elevations and specifications are subject to change without notice and will vary between communities. Graphics, design, plans, options, room sizes and square footage contained herein are approximate and should be considered estimates only. Plans may not be drawn to scale.

© This drawing is an instrument of service and the property of SEDA Construction Company. It is furnished for Contract Document purposes only and any use of reproduction without the expressed written permission of this Corporation is prohibited. All rights of design and invention are expressly reserved.



## BROCHURE UPGRADES & OPTIONS

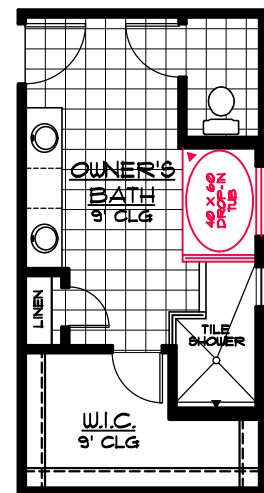
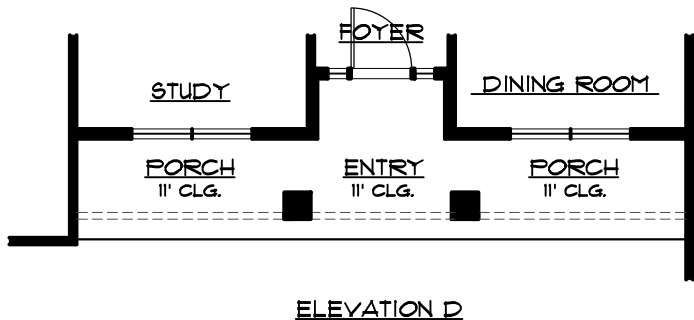
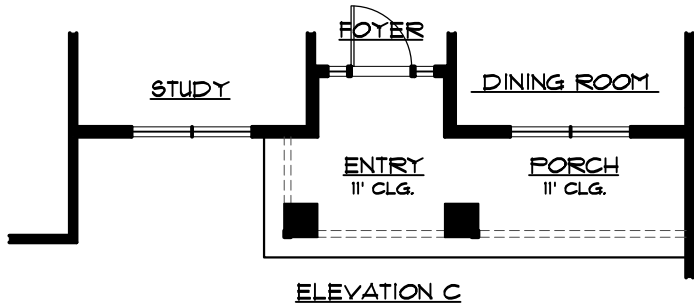


SQUARE FOOTAGE:

TOTAL HVAC -  
WITH OPTIONAL  
BREAKFAST

2746

COVERED PORCH - 155



OPTIONAL OWNER'S BATH



*Elevation A*



*Elevation B*



*Elevation C*



*Elevation D*